

VERSALIFT

VTL145-F

Van mounted telescopic platform



Available for class B driving licence



LMC controls with variable outreach



Emergency lowering controls at the pedestal



Turret tailswing within the mirrors



Outriggers within the mirrors



VERSALIFT

A **TIME** MANUFACTURING COMPANY

VTL145-F - Mercedes-Benz Sprinter

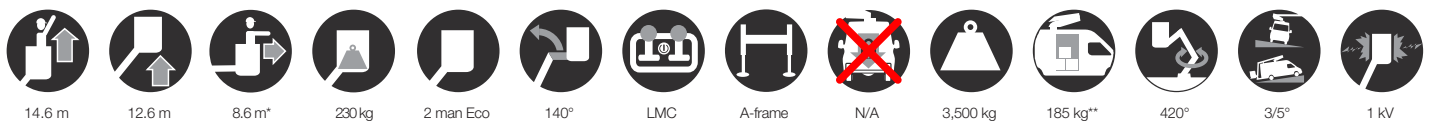


More payload for workshop, parts and tools

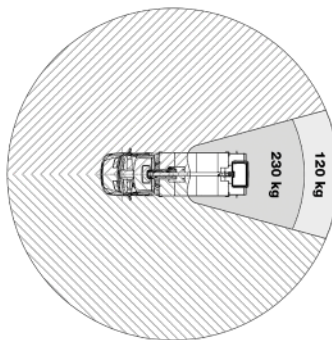
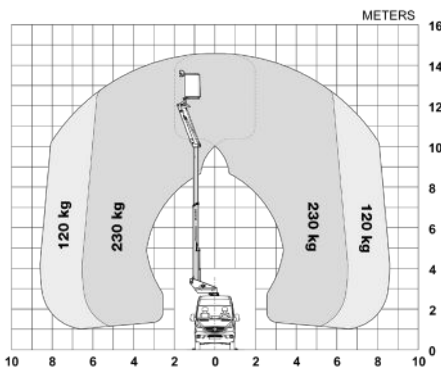
Manufactured from 1.5mm thick ultra-high strength steel

Added stability delivering smooth and steady working conditions

■ Length: 7,250 mm ■ Height: 3,490 mm ■ Wheelbase: 3,665 mm



Diagramme(s)



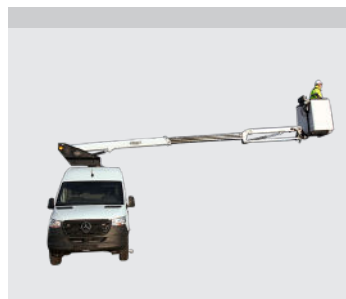
Options

Workshop interior
LED ceiling lights in the van
Limited working area without outriggers
Walk-Through-System
Inverter
Reversing camera

Bucket rotator (2 x 90°)
Drive option (drive the vehicle with raised platform)
Tow bar



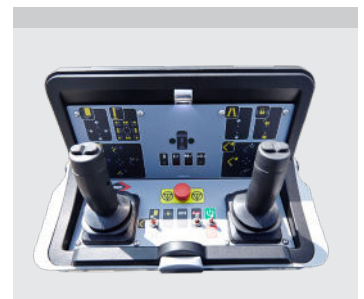
The shaped profile ultra high strength steel booms provide improved rigidity, stiffness and performance



Turret/knuckle tail swing and outriggers within the mirrors



Workshop interior (optional)



LMC (Load Moment Controls): Variable outreach and up to 2 actions at a time (1 per joystick)

Notes

Technical information is subject to change without prior notice. Images may show optional equipment. Installations and/or options may not be available in your specific region.

- * Depending on the vehicle.
- ** Max payload with a driver, a passenger and a full tank of fuel (220 kg added to the installation weight).
- *** Requires a display in the control panel and the option "Limited working area without outriggers".
- **** Reduced outreach.

Distributor

Versalift International
Soendervang 3, 9640 Farsøe
Denmark

+45 9863 2433
sales@versalift.dk
versaliftinternational.com