

# VERSALIFT

## VTM-170-F

Van mounted telescopic platform



LMC controls with variable outreach



Shaped boom profile



Emergency lowering controls at the pedestal



Turret tailswing within the mirrors



Class leading leftover payload



# VERSALIFT

A **TIME** MANUFACTURING COMPANY

# VTM-170-F - Iveco Daily



The most precise control system on the market

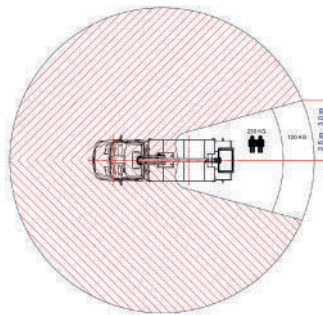
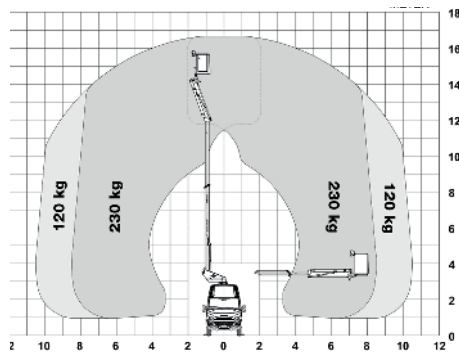
Velvet smooth platform operation and working conditions

Ultra-high strength steel boom delivers exceptional rigidity

■ Length: 8,465 mm ■ Height: 3,700 mm ■ Wheelbase: 4,100 mm



## Diagramme(s)



## Options

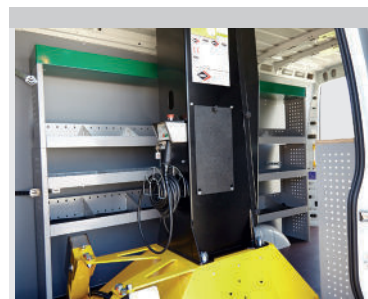
- Bespoke storage racking
- LED ceiling lights in the van
- Inverter
- Airline in the bucket
- Outrigger pads with holders
- Reversing camera
- Removable LED spotlight for the bucket
- Bucket rotator (2 x 90°)
- Plastic toolbox for the bucket
- Limited working area without outriggers



The shaped profile ultra high strength steel booms provide improved rigidity, stiffness and performance



Ground level emergency lowering from the load area (pedestal mounted valve bank)



Workshop interior (optional)



LMC (Load Moment Controls): Variable outreach and up to 2 actions at a time (1 per joystick)

## Notes

Technical information is subject to change without prior notice. Images may show optional equipment. Installations and/or options may not be available in your specific region.

- \* Depending on the vehicle.
- \*\* Max payload with a driver, a passenger and a full tank of fuel (220 kg added to the installation weight).
- \*\*\* Depending on the vehicle position

## Distributor

**Versalift International**  
Soendervang 3, 9640 Farsøe  
Denmark  
  
+45 9863 2433  
sales@versalift.dk  
versaliftinternational.com